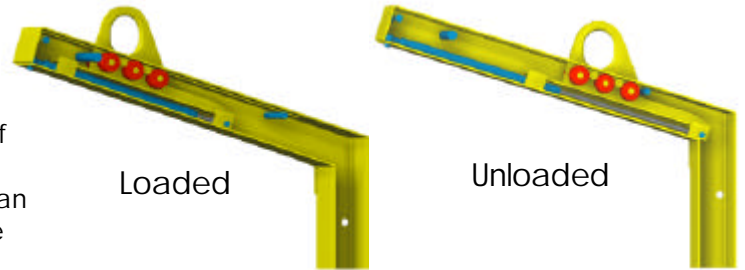


DESCRIPTION

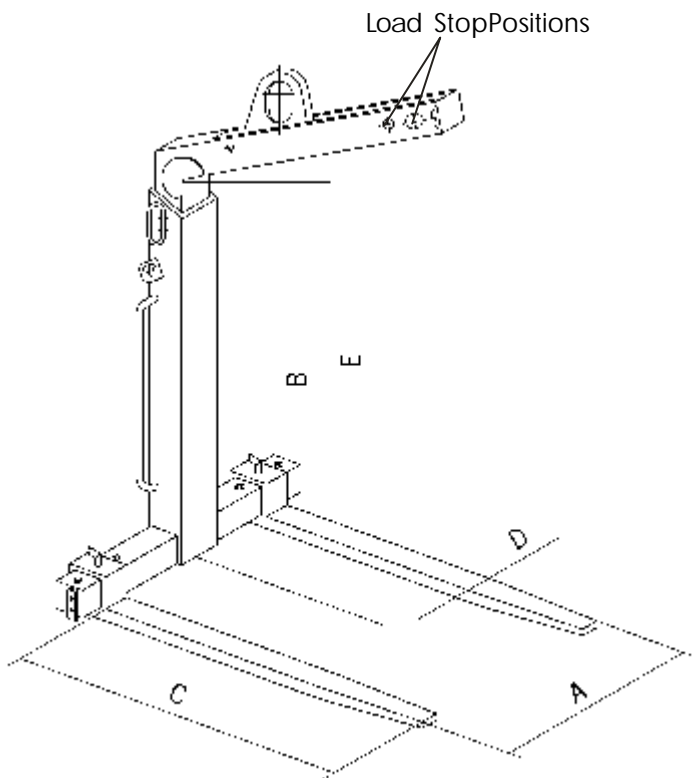
The CFA Crane Forks are supplied as standard with adjustable tine centres and load height. This makes them ideal for a variety of palletised loads. The hooking ring trolley is connected to a gas spring that returns the trolley to the unloaded position when the load is removed thus ensuring easy engagement and disengagement of the fork.

DETAIL

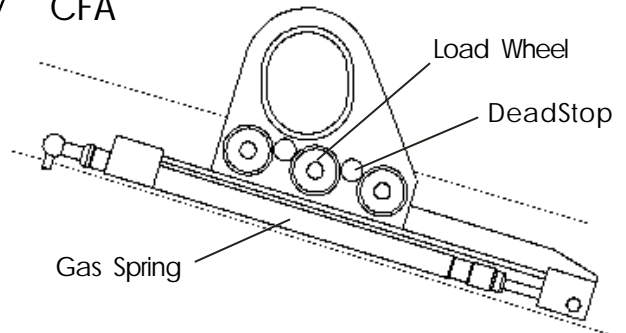
The automatic self-balancing system holds the fork level when unloaded. Once engaged with the load the hooking ring moves to a selectable 'loaded' stop. The CFA has two positions as standard to suit load widths of 800mm and 1000mm. For correct functioning of the mechanism the weight of the load must be greater than 20% of the W.L.L of the fork. This minimum load can be affected by temperature, see note below.



DIAGRAM



CFA



Automatically adjustable lifting ring

The automatic balancing system contains a gas spring; this is a self-contained hydropneumatic ram, which provides a controlled rate of movement. The gas spring contains pressurised Nitrogen & cannot be subjected to high temperatures.

Limits of a gas spring

Storage + 80°C to -20°C
In-use + 40°C to -5°C

TABLE

MODEL	WLL Tonnes	Weight kg	A	B	C	D	E
CFA 1.0	1.0	140	350-500	1100-1600	1000	100X30	1420-1920
CFA 1.5	1.5	165	350-500	1300-2000	1000	100X40	1650-2350
CFA 2.0	2.0	220	400-500	1300-2000	1000	120X40	1655-2355
CFA 3.0	3.0	280	450-500	1300-2000	1000	120X50	1720-2400
CFA 5.0	5.0	380	500-1000	1300-2000	1000	150X60	1710-2410