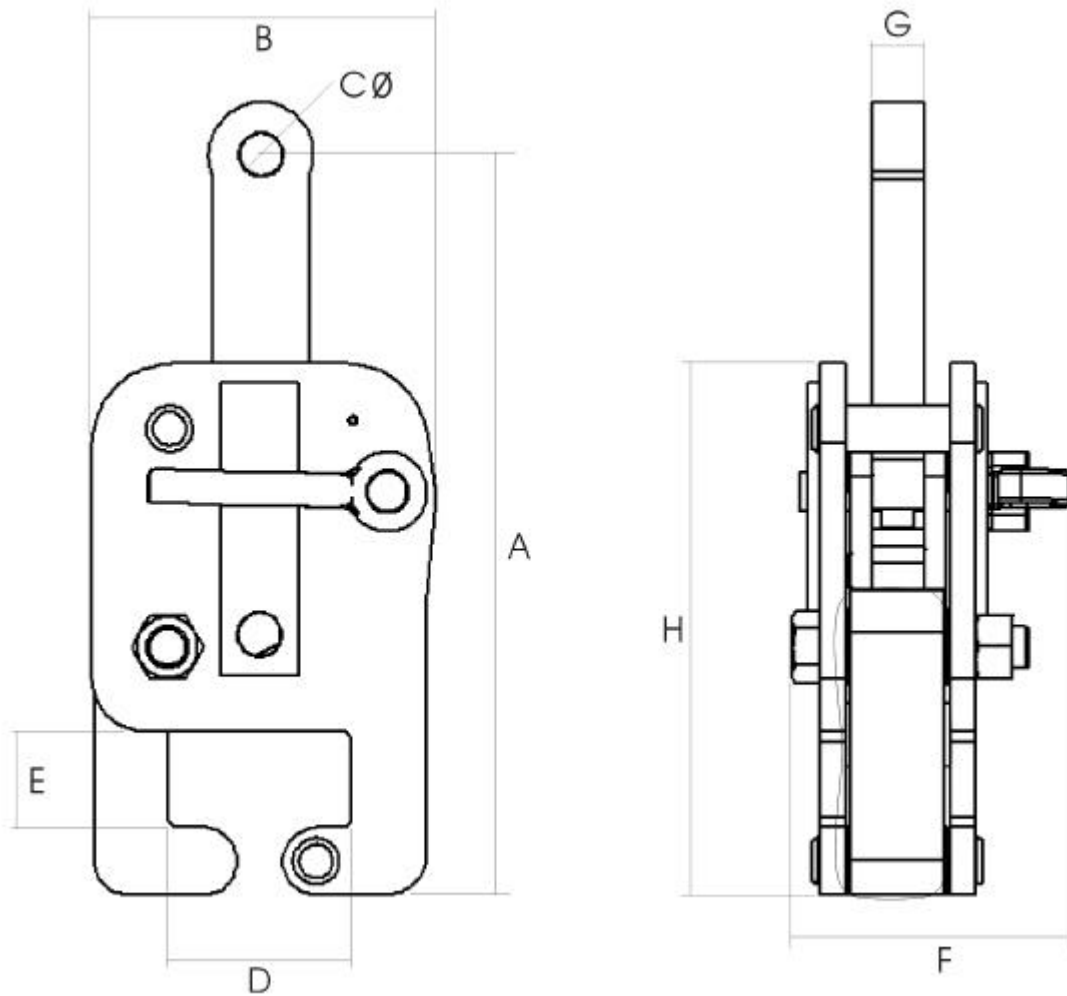


DESCRIPTION

The CR is designed to lift single rails securely and safely. The clamp is designed to fit most types of rail section sizes currently in use. The CR is locked onto the rail via a lever operated spring mechanism. The narrow profile enables easy attachment to rails when they are stacked. For long rails it is recommended to use clamps suspended from a lifting beam. The CR is also available with a chain and lifting eye.

DIAGRAM



TABLE

MODEL	WLL Tonnes	Weight kg	A	B	C	D	E	F	G	H
CR1 (750)	1.0	13.0	350	152	20	90	46	144	25	229
CR2 (21)	2.0	13.0	350	163	20	90	46	144	25	229