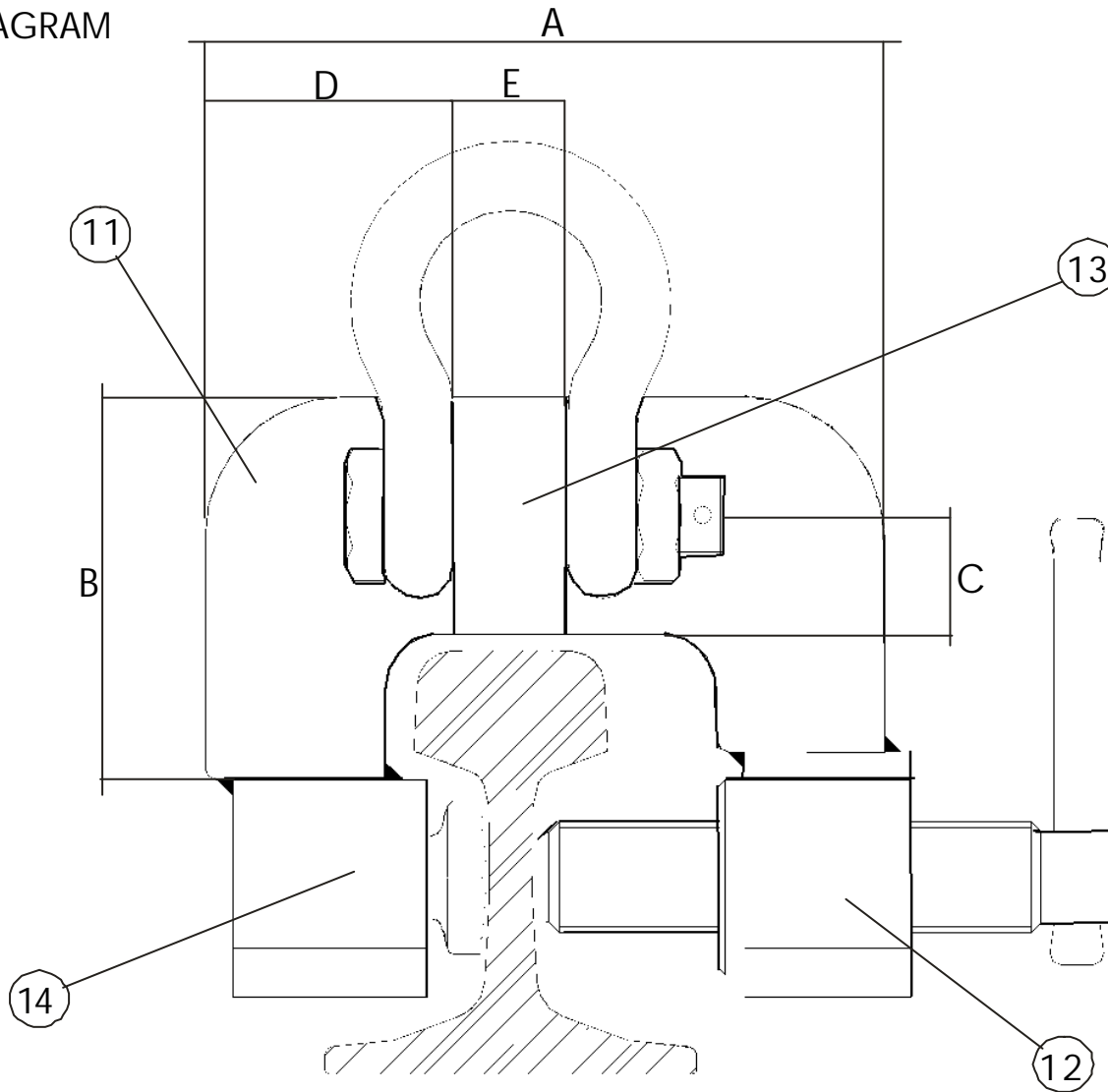


DESCRIPTION

The Camlok Rail Pulling Screwcam Clamp is designed to fit to most rail sections currently in use. The clamp is attached to the web of the rail by turning the screwshaft mechanism. The end of the screwshaft has hardened steel circular teeth. The opposing pad also has circular hardened steel teeth. The shaft is supported on a bearing that allows a high degree of angular movement. The thrust (compressive load transmitted by the screwed shaft) is resisted by a ball-bearing seated in a cupped bearing plate within the clamp body. When a lateral load is applied to the clamp, the pad rotates in a cam action and grips the rail web securely.

DIAGRAM



TABLE

MODEL	WLL Tons	Weight t kg	A	B	C	D	E
RP1.5	1.5	6	244	138	42	95	30
RP3.0	3	8	244	138	42	90	30
RP5.0	5	13	244	143	42	87	45

REF	DESCRIPTION
11	BODY
12	BUSH HOUSING
13	SHACKLE LUG
14	PAD HOUSING

Cad\TechnicalServ\