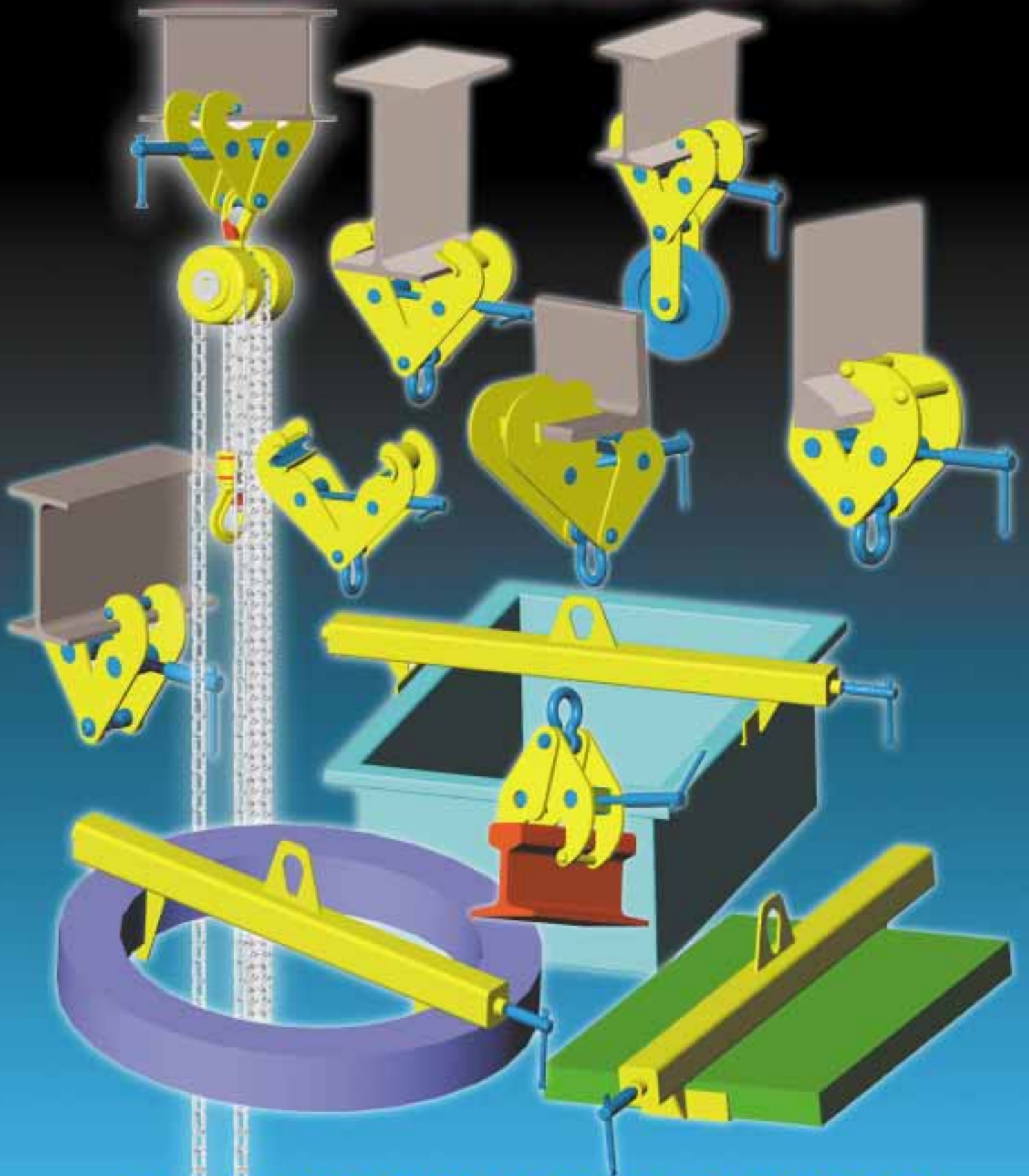


CAMLOK



SCREWLOK BEAM CLAMPS

SC BEAM CLAMP



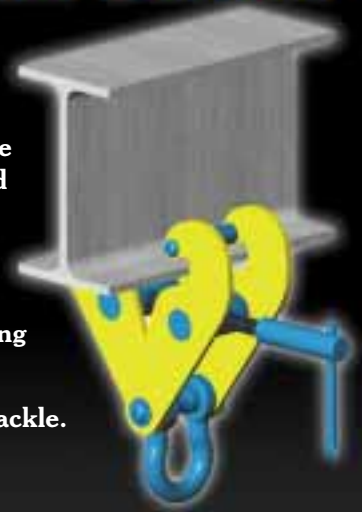
Camlok Beam Clamps are designed for attachment to the lower flange of Structural Steel Beams, to provide a semi-permanent lifting point.

The clamp can be quickly and easily attached via the screw type mechanism. The built in suspension load axle minimises headroom.

NOTE: It is not recommended that this clamp is used as a lifting point attached to loads unless the clamp is supplied with the Patented Camlok gripping force indicator.

The SC92 series clamp is fitted with a suspension shackle.

SC92 BEAM CLAMP



MODEL	WLL ton	FLANGE width mm	WEIGHT kg
SC1	1	75-230	3.8
SC2	2	75-230	4.6
SC3	3	80-320	9.2
SC5	5	90-310	11.0
SC10	10	90-320	17.2

MODEL	WLL ton	FLANGE width mm	WEIGHT kg
SC921	1	75-210	5
SC922	2	75-210	6
SC923	3	100-270	8
SC923/L	3	75-305	9
SC925	5	100-270	10
SC925/L	5	75-305	12
SC9210	10	75-305	16

SCT BEAM CLAMP



The "Camlok" twin screwlok beam clamps are designed to enable one beam to be suspended beneath another beam. The clamp can be quickly and easily attached to both beams via the screw mechanism. The SCT twin clamps can be supplied fixed at 90° to each other or with a swivel mechanism that allows 360° rotation.

MODEL	WLL ton	WEIGHT kg
SC921T	1	11
SC922T	2	13
SC923T	3	16
SC923/L/T	3	20
SC925T	5	23
SC925/L/T	5	27
SC9210T	10	37

SCT BEAM CLAMP (WITH SWIVEL)



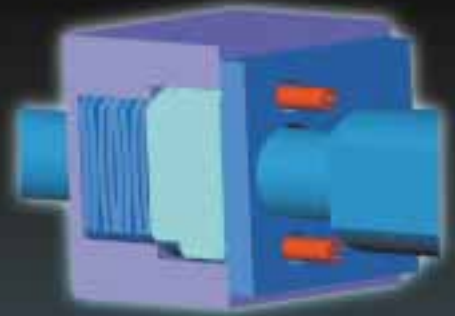
GRIPPING FORCE INDICATOR

CAMLOK PATENT No. 2303713



All the clamps illustrated in this catalogue are attached by turning a screw mechanism that close a set of jaws onto the supporting section, thus providing a safe suspension/lifting point.

Experience has shown that it is potentially dangerous to attach this type of clamp to a load that is to be lifted unless it can be guaranteed that the operator applies sufficient torque to the handle of the screw mechanism to securely grip the load.



The "Camlok" gripping force indicator patent number 2303713 has been designed and is incorporated into all of our screwlok type lifting clamps to overcome this problem.

The operator is aware that sufficient torque has been applied when the two "Red" pins (see illustration above) have retracted flush with the indicator body. The gripping load is indicated by compressing specifically sized bevel washers.



SPECIAL APPLICATIONS

At Camlok, we design and manufacture a wide variety of screwlok clamps for many diverse applications. This illustration shows a screwlok type clamp for lifting and turning wheels during a machining operation (Notice the gripping force indicator).

Check out our WEB Page: www.camlok.co.uk

TSC TRAVELLING SCREWLOK

The "Camlok" Travelling Screwlok is based on our standard type SC Screwlok Beam clamps, and is incorporated into a 4 wheeled trolley. The trolley is adjusted to suit various beam flange widths by turning the handle of the screw mechanism. Tightening the safety locking lever nut against the trolley side plate fixes the trolley wheels at the correct span. Trolley wheels have pre-lubricated ball bearings.

Model TSC1 is of lightweight construction and fitted with polyurethane plastic wheels. This unit is particularly useful in the construction industry for use as a travelling anchor for safety harnesses.

Anti-tilt and anti-drop brackets are fitted.

MODEL	WLL ton	FLANGE width mm	WEIGHT kg
TSC1	1	60-150	2
TSC2	2	75-200	9.9
TSC2/L	2	200-300	10.3
TSC3	3	75-200	17.5
TSC3/L	3	200-320	19.5



SCS BEAM CLAMP (WITH SWIVEL JAW)



The "Camlok" SCS Beam Clamp is based on our standard SC Clamps, and is fitted with swivelling jaws that provide a positive grip on the bottom flange of Rolled Steel Joists. As the clamp is tightened onto the bottom flange the jaw automatically rotates into the horizontal position, thus ensuring the full width of the jaw is in contact with the flanges.

MODEL	WLL ton	FLANGE thickness	FLANGE width	WEIGHT kg
SCS2	2	80-305	20	8
SCS3	3	80-305	25	10
SCS5	5	80-305	25	14
SCS10	10	80-305	30	20

SCH SQUARE SECTION CLAMP



The "Camlok" SCH clamp can be used for lifting Hollow Section or SQ Section Profiles. As shown in the illustration or for attached to Hollow Steel or SQ Section Steelwork to provide a semi-permanent lifting/suspension point. Clamps can be designed up to 10 tons WLL and to suit most sizes of Roller Steel Sections.

SCR RAIL CLAMP



The "Camlok" screwlok type SCR Rail Clamp is designed to be attached to the Rail-head via a screw thread operated mechanism. The clamp has a WLL of 1 ton and is designed to suit most rail section sizes currently in use.

SCP ROUND SECTION CLAMP



The "Camlok" SCP Pipe clamp is quickly and easily attached to pipes and round section bars. The clamp can be used as a temporary lifting/suspension point or, if fitted with the "Camlok" patented gripping force indicator, can be attached to loads to be lifted.

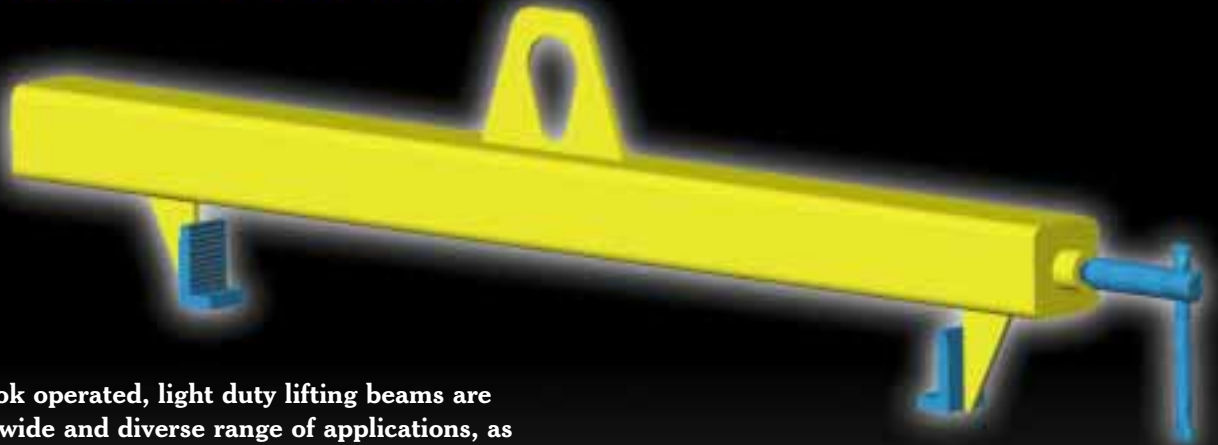
MODEL	WLL ton	PIPE/BAR dia mm	WEIGHT kg
SCP1	1	60-110	6.5
SCP2	2	105-180	18.0
SCP3	3	175-275	30.5
SCP5	5	250-400	61.0

N.B: Other sizes on request.

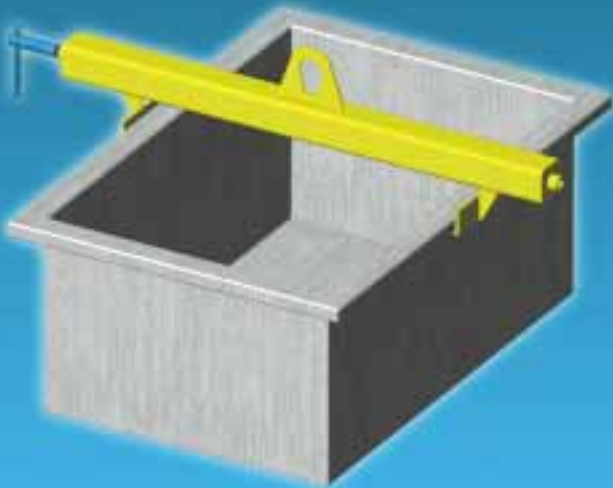
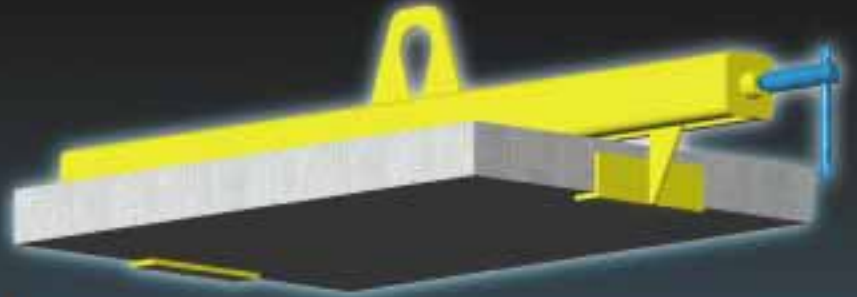
The above 3 clamps are shown as lifting devices. For this application the clamps are fitted with the "Camlok" patented gripping force indicator. See following page for details.

Check out our WEB Page: www.camlok.co.uk

LIGHT DUTY LIFTING BEAM WITH SCREWLOK CLAMP MECHANISM



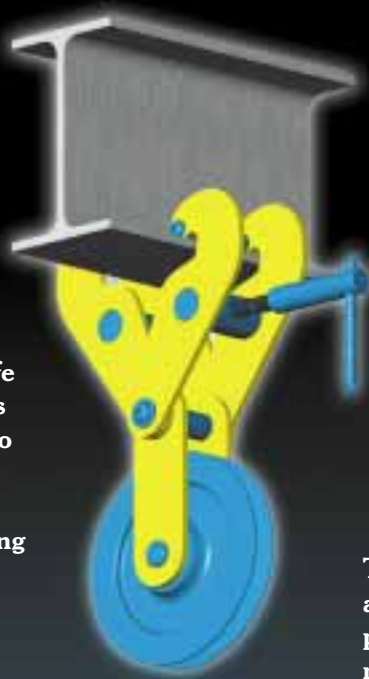
A range of Screwlok operated, light duty lifting beams are available to suit a wide and diverse range of applications, as illustrated in the models shown on this page. Beams can be designed to engage the load externally or internally (or both).



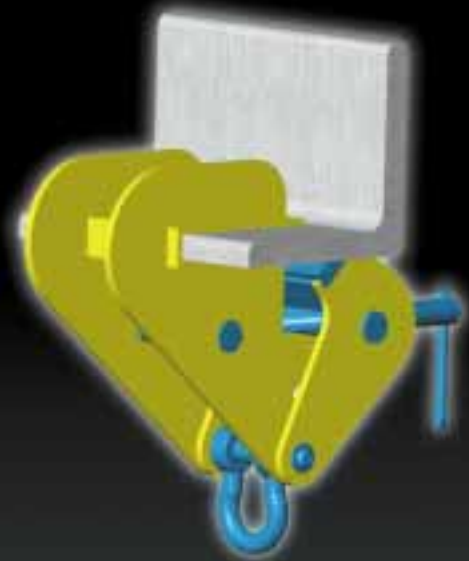
Beams Jaws can be designed and shaped to suit most loads/components to be lifted. Jaws can be fitted with serrated steel teeth or soft secutex pads.

SCW BEAM CLAMP (WITH PULLEY)

The "Camlok" SCW Beam Clamp complete with 200mm diameter sheave provides a semi-permanent lifting or suspension point that can be quickly attached to the bottom flanges of Universal Beams. The clamp is based on our SC2 Beam Clamp. It has a safe working load of 1500kg and is suitable for beam flanges 75 to 210mm wide. The clamp is designed for vertical lifting/pulling only. Side loading is not permissible.



SCA ANGLE CLAMP



The "Camlok" SCA Angle Clamp is designed for quick and easy attachment to Rolled Steel Angles to provide a permanent or temporary lifting point. Turning the screw mechanism tightens the hardened serrated steel toothed pad against the angle upright ensuring that the clamp is firmly attached to the R.S.A.

SCB BULB BAR CLAMP

The "Camlok" SCB Bulb Bar clamp is a variant of our SCA clamp and is particularly useful in the Ship Building Industry. The clamp has a large bow shackle for quick and easy attachment of Hoist, Slings etc.



MODEL	WLL ton	FLANGE width mm	WEIGHT kg
SCA0.5	0.5	40-100	4
SCA1.0	1	40-100	6
SCA2.0	2	50-160	10.5
SCA3.0	3	100-210	19

MODEL	WLL ton	MAX BULB mm	WEIGHT kg
SCB1	1	60	6.5
SCB3	3	83	12.0

Check out our WEB Page: www.camlok.co.uk

CAMLOK

MODERN MANUFACTURING TECHNIQUES

CAMLOK lifting equipment is manufactured using modern production equipment and cost effective flexible manufacturing systems and techniques. Computer aided engineering enables designs and drawings to be produced quickly and cheaply and then downloaded direct to modern computer controlled equipment. Production is controlled by a materials resource planning (MRP) system in conjunction with a very simple cost effective 'kanban' materials/component cost system that synchronises the outputs of the various stages of the manufacturing system. External suppliers of components and materials must be accredited to a recognised quality assurance authority. By adopting and implementing the above manufacturing techniques and investing in 'state of the art' production equipment 'CAMLOK' is able to offer high quality, low cost products at very short delivery times.

OTHER CATALOGUES IN THIS SERIES

PRODUCT CATALOGUE	Ref. No.	INDUSTRY CATALOGUE	Ref. No.
Clamps – Vertical – Horizontal – Section	A01	Construction Building Industry	B01
Grabs	A02	Rail Handling	B02
Beam Clamps (Screwloks)	A03	Terminal/Dockside	B03
Drum Handling	A04		
C Hooks	A05		
Crane Forks	A06	FACTORED EQUIPMENT	Ref. No.
Lifting Beams	A07	Hand chain hoist/trolleys/ lever lift	C01
Mobile Gantries – Shearlegs	A08	Crane weighers/load cells	C02
Jib Cranes	A09	Grade 80 chain systems	C03
Fork Lift Truck Attachments	A10	Electric chain hoists	C04
		Load moving systems/skates	C05
TECHNICAL CATALOGUES	Ref. No.		
Product Technical Manual	D01		

Every CAMLOK Clamp/Grab is proof load tested to 2x WLL. Test certificates, operating instructions and certificate of conformity are supplied with each clamp.

Distributor



WORLDWIDE



CAMLOK is represented in the above countries. Please contact us for further details.

CATALOGUE REFERENCE NUMBER
A03-APR/2000